

# LILLGÅRDEN - PLANLÖSNINGAR

Lillgården, etapp 1  
- Vinnare av Haninge  
arkitekturpris 2018



*Turbinen*





## Barnvänligt och charmigt i lantlig idyll

I Lillgården bor du mitt i en familjevänlig idyll med närhet till både grönska och stad. Radhusen har en klassisk arkitektur som skapar en genuin småstadskänsla och de smälter vackert in i omgivningen. Drömmer du om en plats där barnen kan springa fritt mellan husen och där känslan av gemenskap och omtanke präglar kvarteret, kommer du garanterat att känna dig som hemma i Lillgården.

Lillgården etapp 2 består av 29 radhus på 116-157 kvm.

# HUS 1

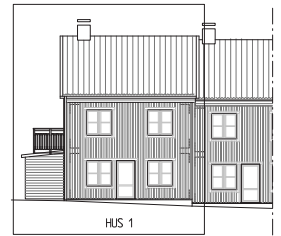
HUSTYP B8, BOYTA 128 M<sup>2</sup>



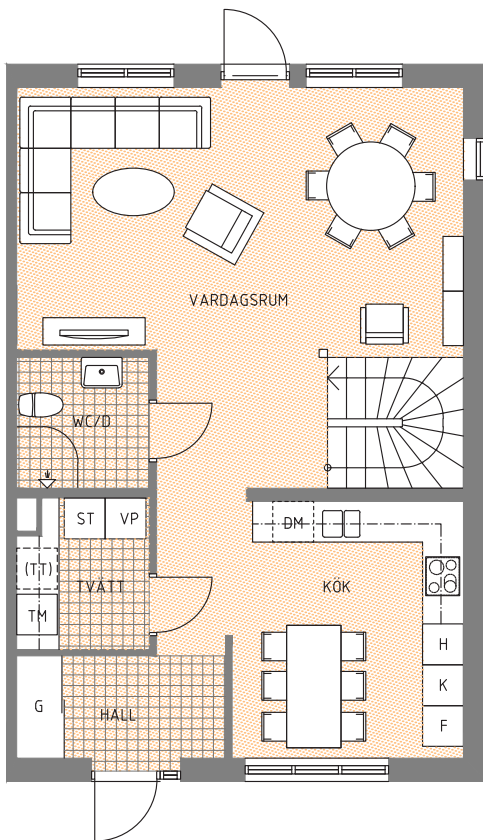
FRAMSIDA  
SKALA 1:200



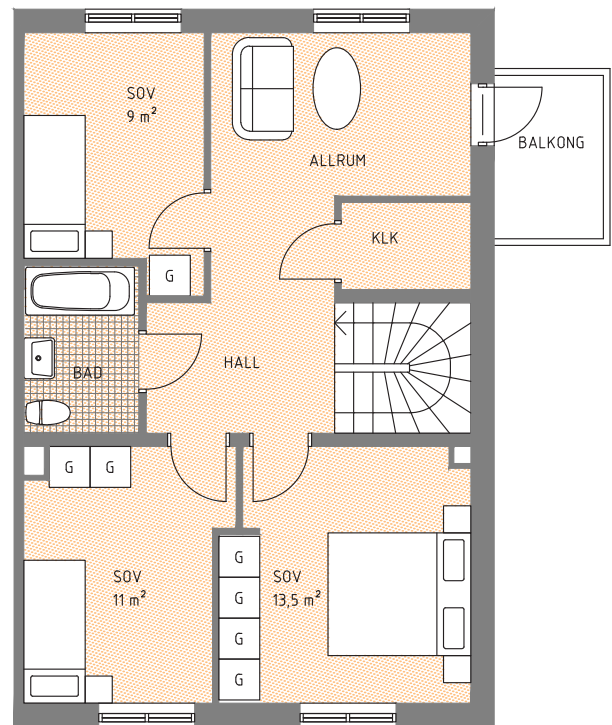
GAVEL  
SKALA 1:200



BAKSIDA  
SKALA 1:200



ENTRÉPLAN



ÖVERVÅNING

## FAKTA

<span style="border: 1px solid black; padding: 2px;">G</span> GARDEROB	<span style="border: 1px solid black; padding: 2px;">DM</span> DISKMASKIN
<span style="border: 1px solid black; padding: 2px;">ST</span> STÄDSKÅP	<span style="border: 1px solid black; padding: 2px;">TM</span> TVÄTTMASKIN
<span style="border: 1px solid black; padding: 2px;">H</span> HÖGSKÅP MED UGN O MICRO	<span style="border: 1px dashed black; padding: 2px;">(TT)</span> PLATS FÖR TORKTUMLARE
<span style="border: 1px solid black; padding: 2px;">K</span> KYL	<span style="border: 1px solid black; padding: 2px;">VP</span> VÄRMEPANNA
<span style="border: 1px solid black; padding: 2px;">F</span> FRYS	KLÄDSTÅNG



HUSTYP B2, BOYTA 130 M<sup>2</sup>

# HUS 2 | 28



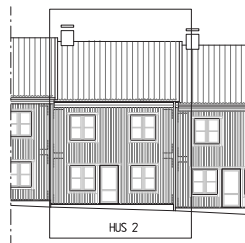
HUS 2

FRAMSIDA  
SKALA 1:200



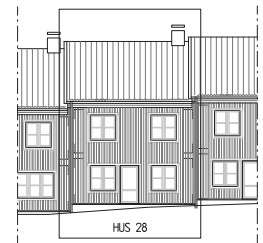
HUS 28

FRAMSIDA  
SKALA 1:200



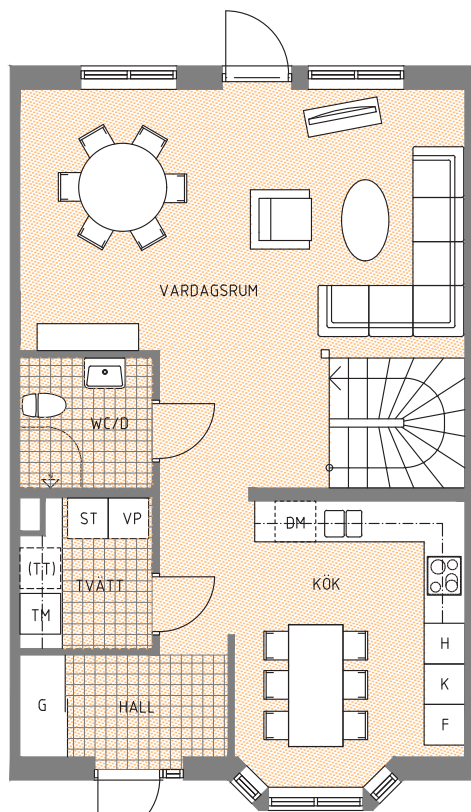
HUS 2

BAKSIDA  
SKALA 1:200

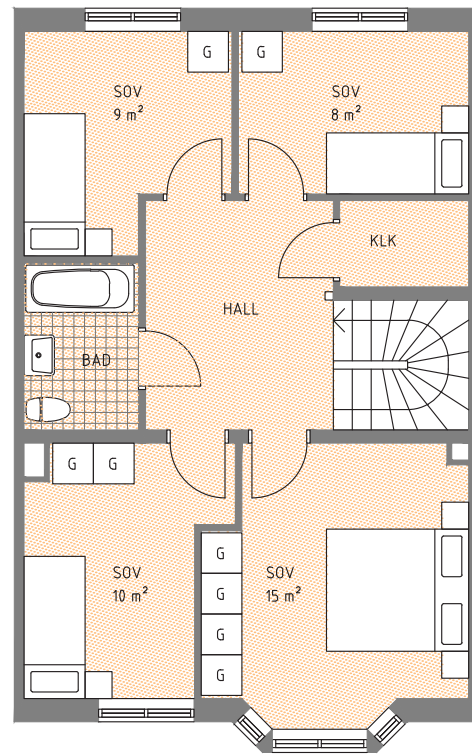


HUS 28

BAKSIDA  
SKALA 1:200



ENTRÉPLAN



ÖVERVÅNING

## FAKTA

<span style="border: 1px solid black; padding: 2px;">G</span> GARDEROB	<span style="border: 1px solid black; padding: 2px;">DM</span> DISKMASKIN
<span style="border: 1px solid black; padding: 2px;">ST</span> STÄDSKÅP	<span style="border: 1px solid black; padding: 2px;">TM</span> TVÄTTMASKIN
<span style="border: 1px solid black; padding: 2px;">H</span> HÖGSKÅP MED UGN O MICRO	<span style="border: 1px dashed black; padding: 2px;">(TT)</span> PLATS FÖR TORKTUMLARE
<span style="border: 1px solid black; padding: 2px;">K</span> KYL	<span style="border: 1px solid black; padding: 2px;">VP</span> VÄRMEPANNA
<span style="border: 1px solid black; padding: 2px;">F</span> FRYS	KLÄDSTÅNG



# HUS 3 | 27

HUSTYP B1, BOYTA 128 M<sup>2</sup>



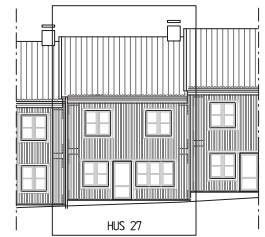
FRAMSIDA  
SKALA 1:200



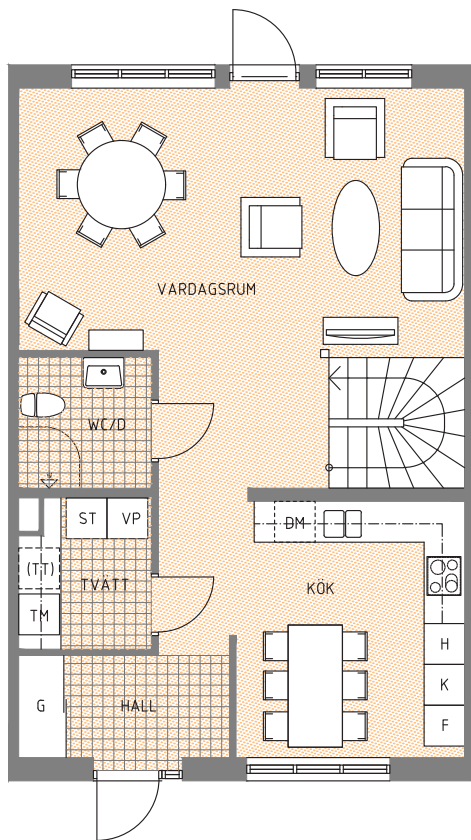
FRAMSIDA  
SKALA 1:200



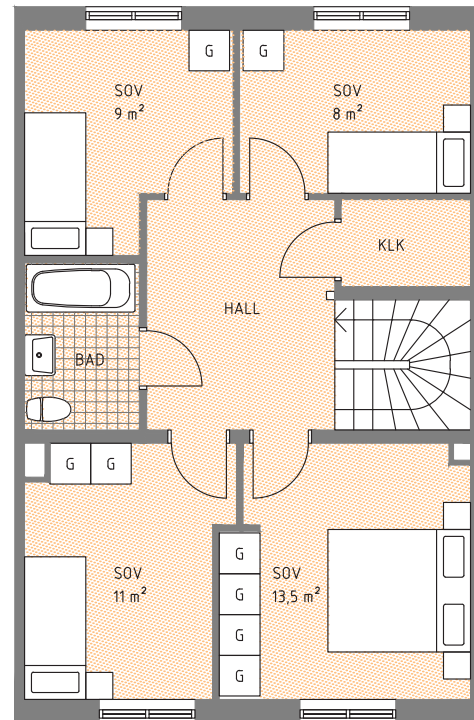
BAKSIDA  
SKALA 1:200



BAKSIDA  
SKALA 1:200



ENTRÉPLAN

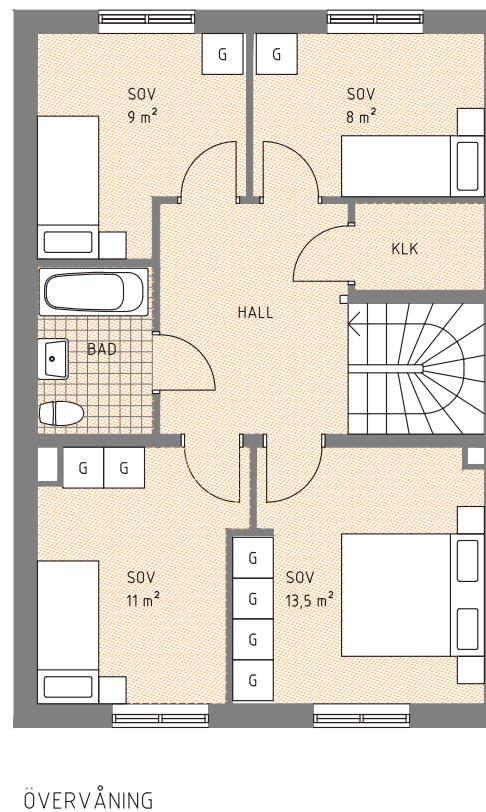
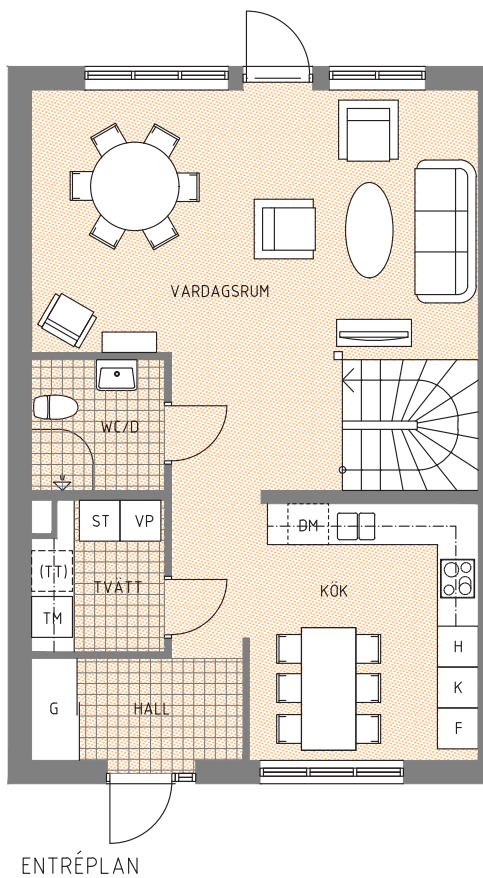
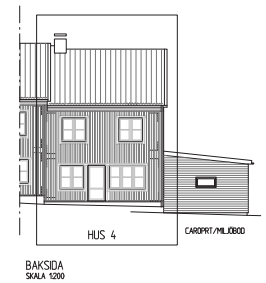
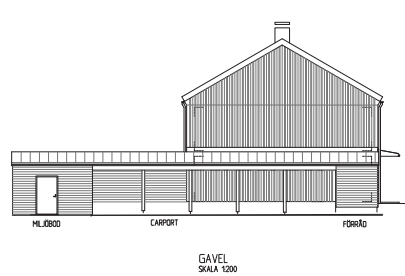


ÖVERVÅNING

## FAKTA

<span style="border: 1px solid black; padding: 2px;">G</span> GARDEROB	<span style="border: 1px solid black; padding: 2px;">DM</span> DISKMASKIN
<span style="border: 1px solid black; padding: 2px;">ST</span> STÄDSKÅP	<span style="border: 1px solid black; padding: 2px;">TM</span> TVÄTTMASKIN
<span style="border: 1px solid black; padding: 2px;">H</span> HÖGSKÅP MED UGN O MICRO	<span style="border: 1px dashed black; padding: 2px;">(TT)</span> PLATS FÖR TORKTUMLARE
<span style="border: 1px solid black; padding: 2px;">K</span> KYL	<span style="border: 1px solid black; padding: 2px;">VP</span> VÄRMEPANNA
<span style="border: 1px solid black; padding: 2px;">F</span> FRYS	KLÄDSTÅNG





## FAKTA

<span style="border: 1px solid black; padding: 2px;">G</span> GARDEROB	<span style="border: 1px solid black; padding: 2px;">DM</span> DISKMASKIN
<span style="border: 1px solid black; padding: 2px;">ST</span> STÄDSKÅP	<span style="border: 1px solid black; padding: 2px;">TM</span> TVÄTTMASKIN
<span style="border: 1px solid black; padding: 2px;">H</span> HÖGSKÅP MED UGN O MICRO	<span style="border: 1px dashed black; padding: 2px;">(TT)</span> PLATS FÖR TORKTUMLARE
<span style="border: 1px solid black; padding: 2px;">K</span> KYL	<span style="border: 1px solid black; padding: 2px;">VP</span> VÄRMEPANNA
<span style="border: 1px solid black; padding: 2px;">F</span> FRYS	KLÄDSTÅNG

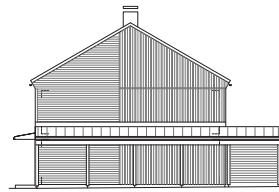


# HUS 5

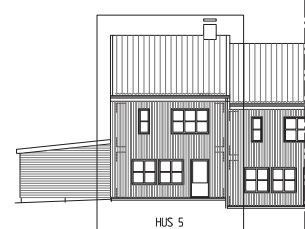
HUSTYP C2, BOYTA 116 M<sup>2</sup>



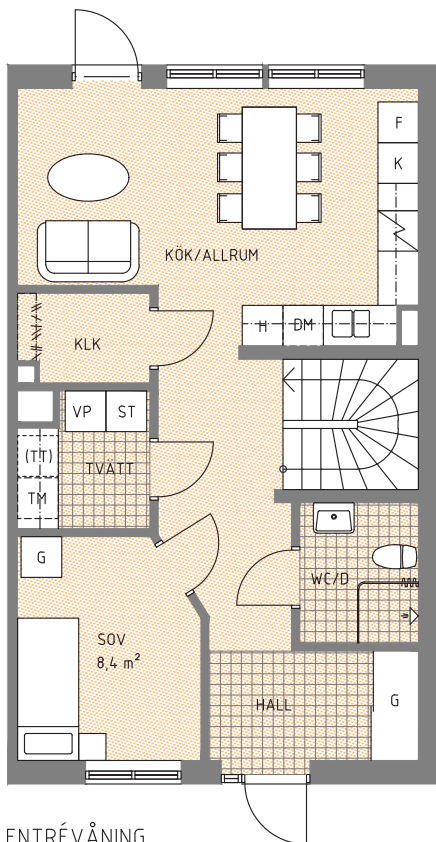
FRAMSIDA  
SKALA 1:200



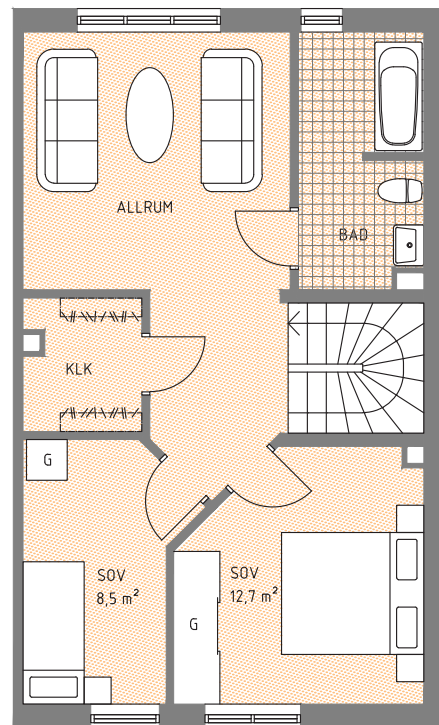
GAVEL  
SKALA 1:200



BAKSIDA  
SKALA 1:200










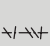


ENTRÉVÅNING



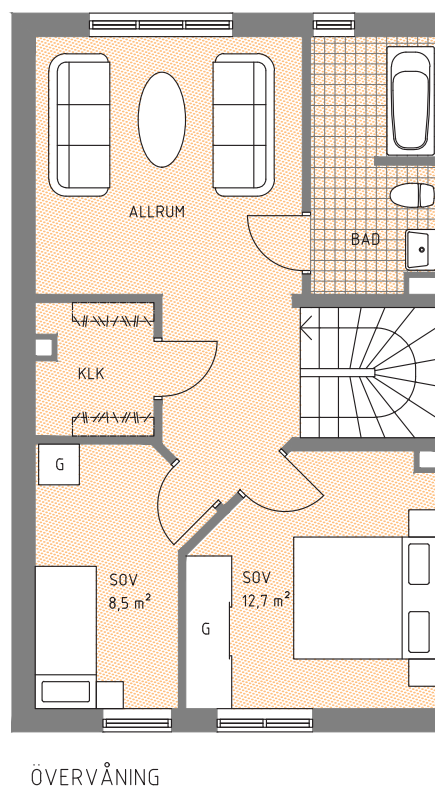
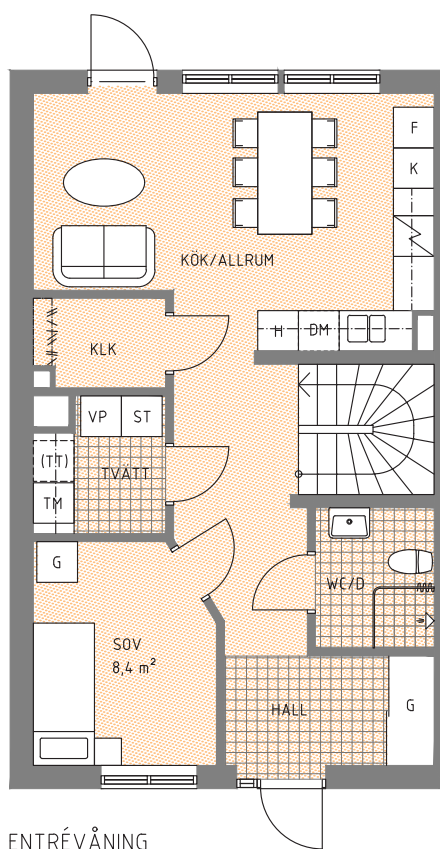
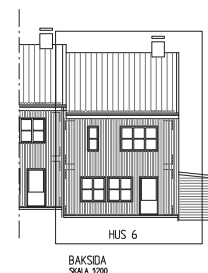
ÖVERVÅNING

## FAKTA

 G	GARDEROB	 DM	DISKMASKIN
 ST	STÄDSKÅP	 TM	TVÄTTMASKIN
 H	HÖGSKÅP MED UGN O MICRO	 (TT)	PLATS FÖR TORKTUMLARE
 K	KYL	 VP	VÄRMEPANNA
 F	FRYS		KLÄDSTÅNG







## FAKTA

	GARDEROB		DISKMASKIN
	STÄDSKÅP		TVÄTTMASKIN
	HÖGSKÅP MED UGN O MICRO		PLATS FÖR TORKTUMLARE
	KYL		VÄRMEPANNA
	FRYS		KLÄDSTÅNG



# HUS 7 | 17

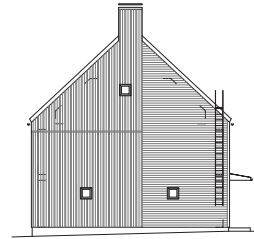
HUSTYP A1, BOYTA 156 M<sup>2</sup>



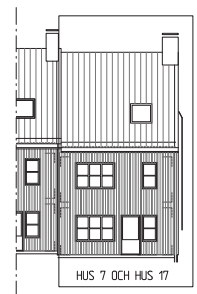
FASAD FRAMSIDA  
SKALA 1200



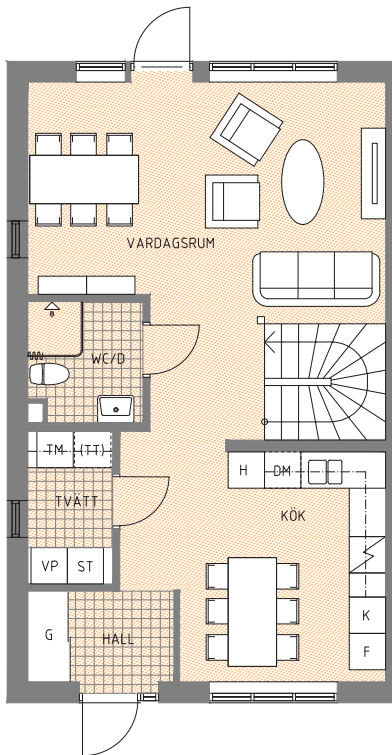
FASAD FRAMSIDA  
SKALA 1200



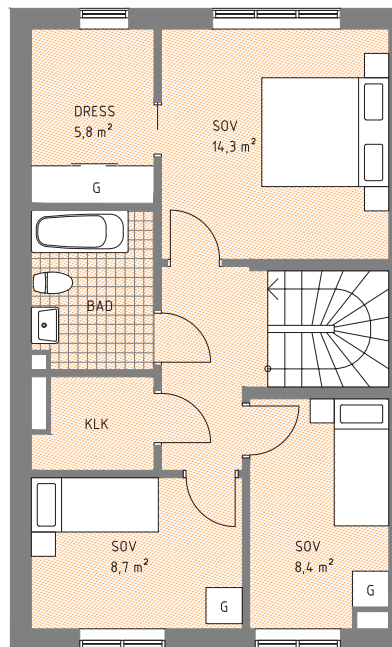
GÄVEL  
SKALA 1200



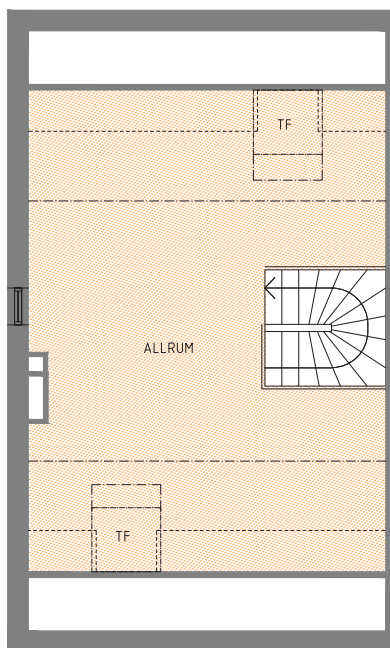
BAKSIDA  
SKALA 1200



ENTRÉPLAN



ÖVERVÅNING



VINDSVÅNING

GRÄNS  
BOYTA  
GRÄNS  
SNEDTAK  
RUMSHÖJD  
2400

## FAKTA

- G GARDEROB
- ST STÄDSKÅP
- K KYL
- F FRYSS
- H HÖGSKÅP MED UGN O MICRO
- DM DISKMASKIN
- TM TVÄTTMASKIN
- (TT) PLATS FÖR TORKTUMLARE
- VP VÄRMEPANNA
- KLÄDSTÅNG
- TF TAKFÖNSTER

HUSTYP A1, BOYTA 156 M<sup>2</sup>

# HUS 8 | 12 | 14 | 19



FASAD FRAMSIDA  
SKALA 1:200

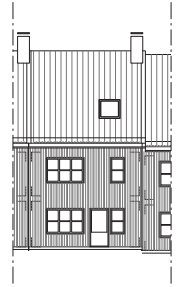


FASAD FRAMSIDA  
SKALA 1:200

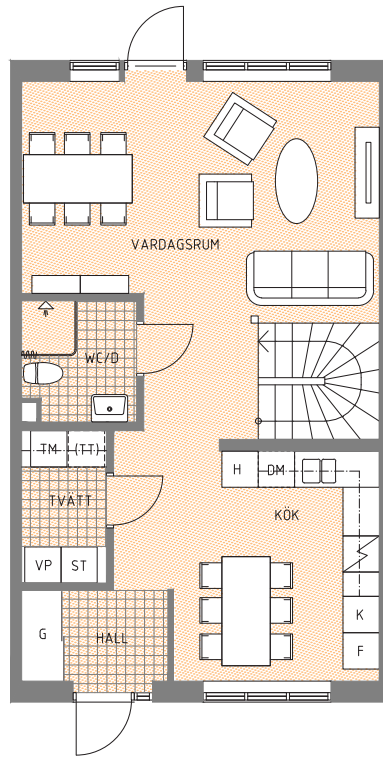
FASAD FRAMSIDA  
SKALA 1:200



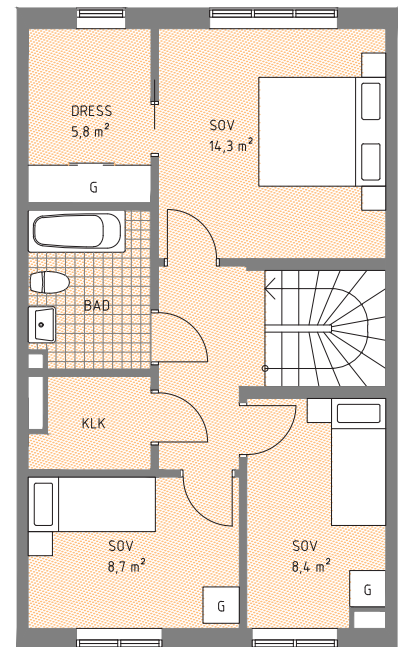
FASAD FRAMSIDA  
SKALA 1:200



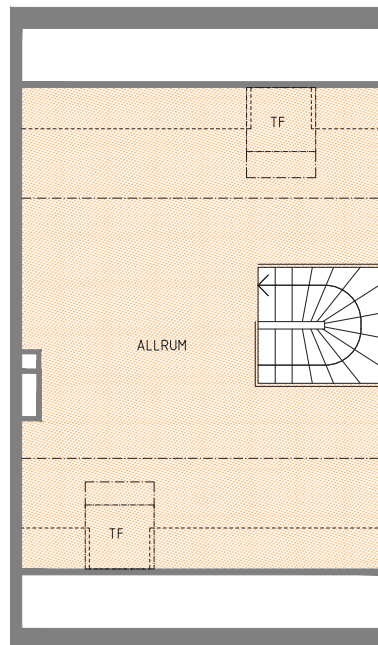
BAKSIDA  
SKALA 1:200



ENTRÉPLAN



ÖVERVÅNING



VINDSVÅNING

GRÄNS  
BOYTA

GRÄNS  
SNEDTAK

RUMSHÖJD  
24.00

## FAKTA

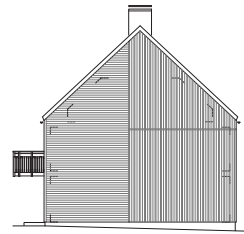
- G GARDEROB
- ST STÄDSKÅP
- K KYL
- F FRYS
- H HÖGSKÅP MED UGN O MICR
- DM DISKMASKIN
- TM TVÄTTMASKIN
- (TT) PLATS FÖR TORKTUMLARE
- VP VÄRMEPANNA
- KLÄDSTÅNG
- TF TAKFÖNSTER

# HUS 9

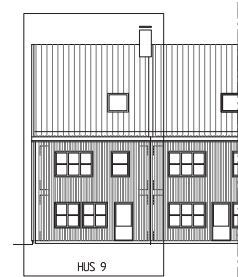
HUSTYP A5, BOYTA 156 M<sup>2</sup>



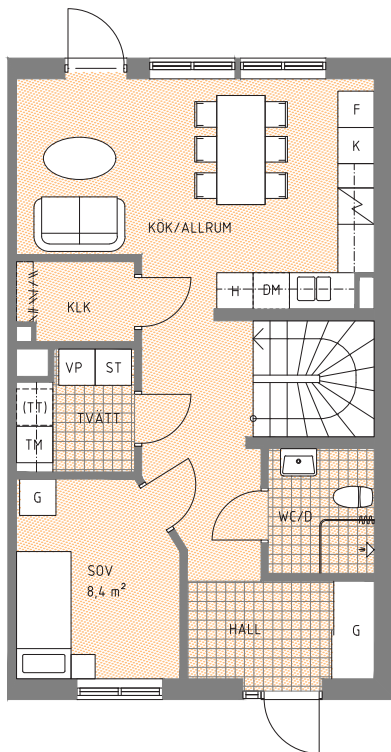
FASAD FRAMSIDA  
SKALA 1:200



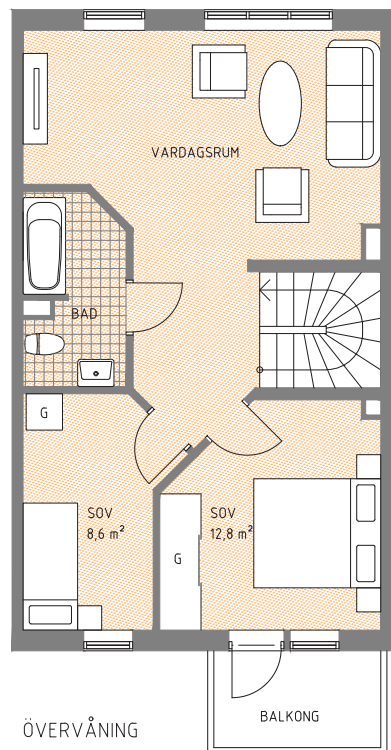
GAVEL  
SKALA 1:200



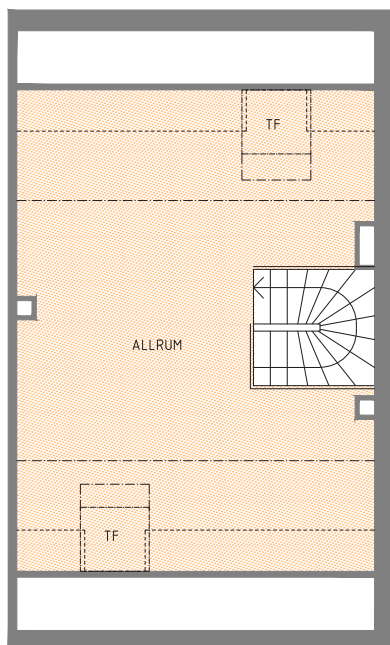
BAKSIDA  
SKALA 1:200



ENTRÉPLAN



ÖVERVÅNING



VINDSVÅNING

GRÄNS  
BOYTA  
GRÄNS  
SNEDTAK  
RUMSHÖJD  
24,00

## FAKTA

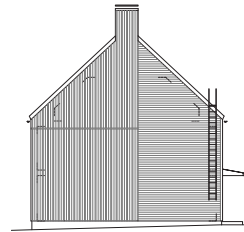
- G GARDEROB
- ST STÄDSKÅP
- K KYL
- F FRYSS
- H HÖGSKÅP MED UGN O MICRO
- DM DISKMASKIN
- TM TVÄTTMASKIN
- (TT) PLATS FÖR TORKTUMLARE
- VP VÄRMEPANNA
- ↔ KLÄDSTÅNG
- TF TAKFÖNSTER

HUSTYP A1, BOYTA 156 M<sup>2</sup>

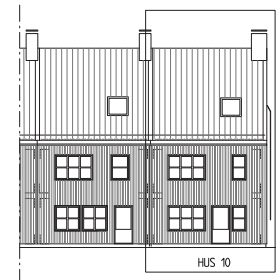
# HUS 10



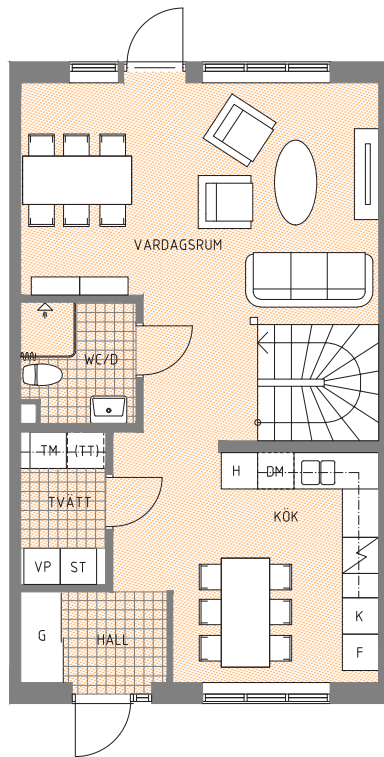
FASAD FRAMSIDA  
SKALA 1:200



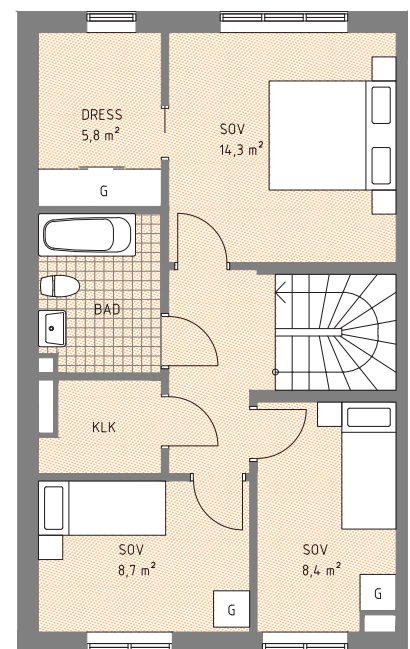
GAVEL  
SKALA 1:200



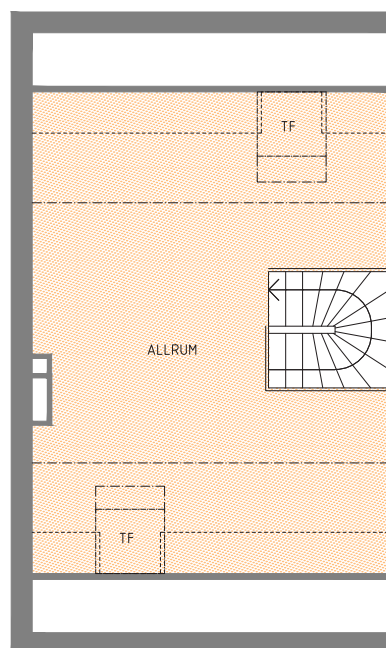
BAKSIDA  
SKALA 1:200



ENTRÉPLAN



ÖVERVÅNING



VINDSVÅNING

GRÄNS  
BOYTA

GRÄNS  
SNEDTAK  
RUMSHÖJD  
2400

## FAKTA

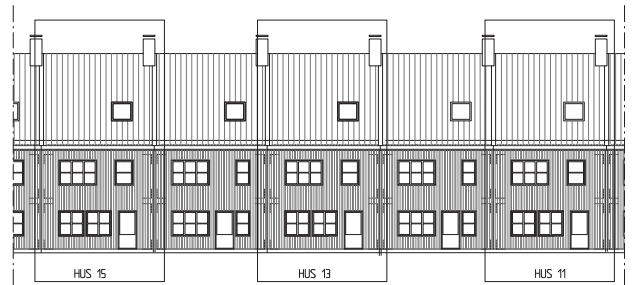
- G GARDEROB
- ST STÄDSKÅP
- K KYL
- F FRYS
- H HÖGSKÅP MED UGN O MICRÖ
- DM DISKMASKIN
- TM TVÄTTMASKIN
- (TT) PLATS FÖR TORKTUMLARE
- VP VÄRMEPANNA
- KLÄDSTÅNG
- TF TAKFÖNSTER

# HUS 11 | 13 | 15

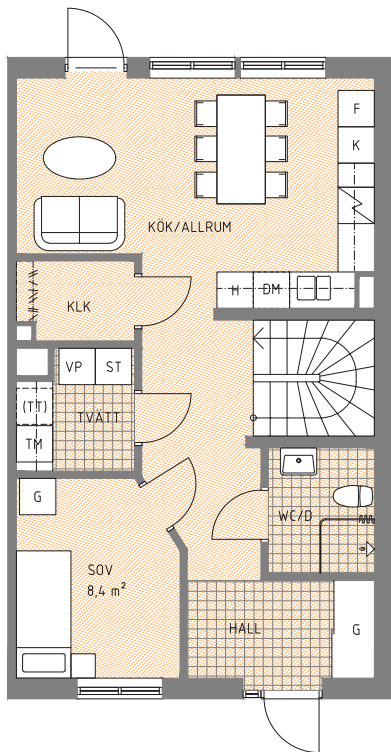
HUSTYP A5, BOYTA 156 M<sup>2</sup>



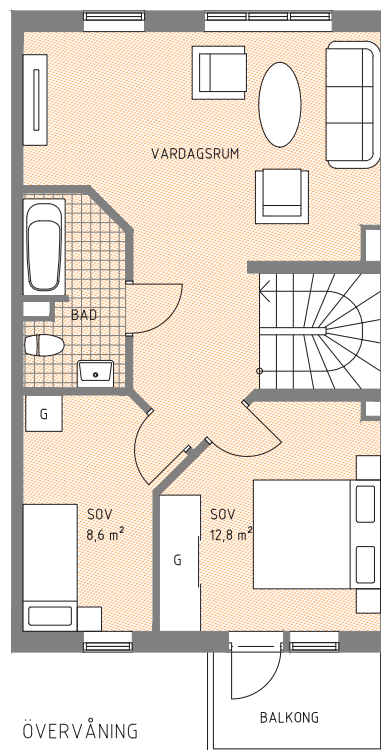
FASAD FRAMSIDA  
SKALA 1:200



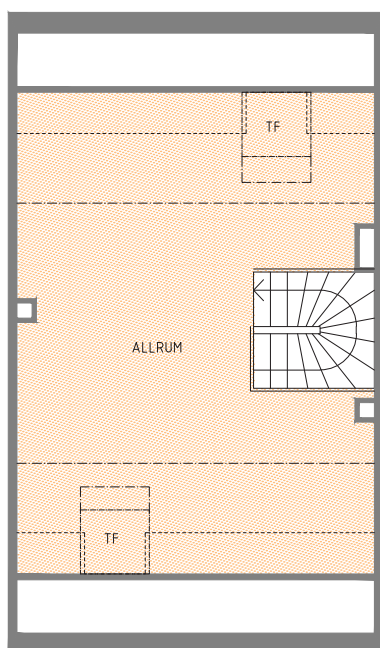
BAKSIDA  
SKALA 1:200



ENTRÉPLAN



ÖVERVÅNING



VINDSVÅNING

GRÄNS  
BOYTA  
GRÄNS  
SNEDTAK  
RUMSHÖJD  
24,00

## FAKTA

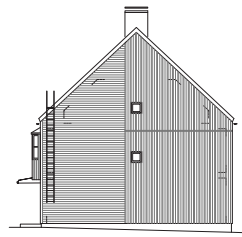
- G GARDEROB
- ST STÄDSKÅP
- K KYL
- F FRYS
- H HÖGSKÅP MED UGN O MICRO
- DM DISKMASKIN
- TM TVÄTTMASKIN
- (TT) PLATS FÖR TORKTUMLARE
- VP VÄRMEPANNA
- KLÄDSTÅNG
- TF TAKFÖNSTER

HUSTYP A1, BOYTA 156 M<sup>2</sup>

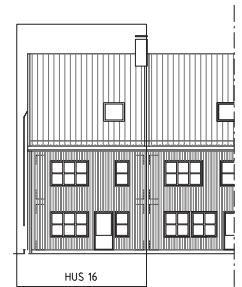
# HUS 16



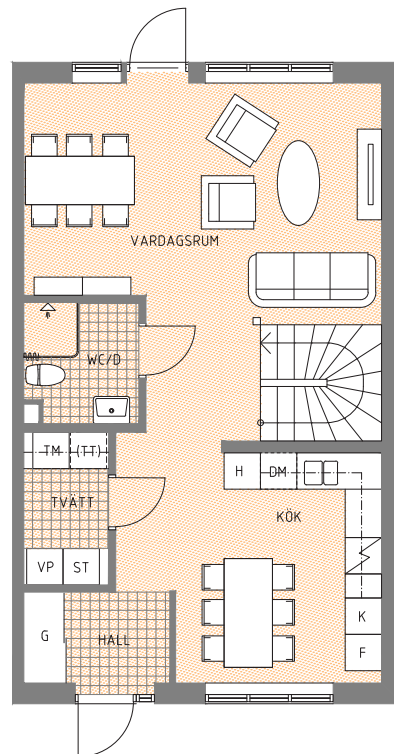
FASAD FRAMSIDA  
SKALA 1:200



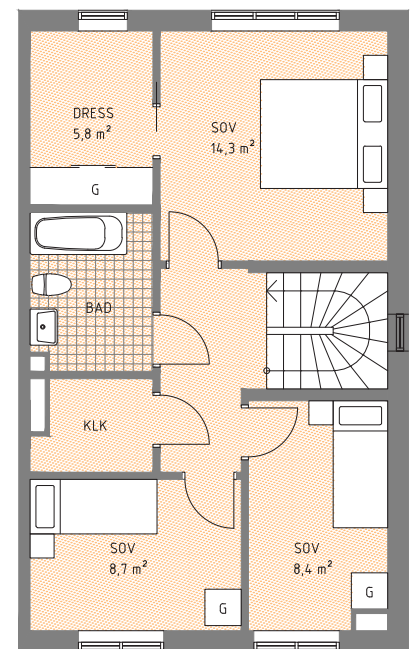
GAVEL  
SKALA 1:200



BAKSIDA  
SKALA 1:200



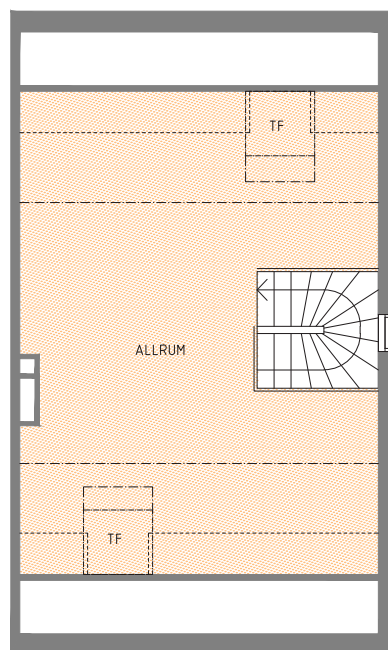
ENTRÉPLAN



ÖVERVÅNING

## FAKTA

- G GARDEROB
- ST STÄDSKÅP
- K KYL
- F FRYS
- H HÖGSKÅP MED UGN O MICRO
- DM DISKMASKIN
- TM TVÄTTMASKIN
- (TT) PLATS FÖR TORKTUMLARE
- VP VÄRMEPANNA
- KLÄDSTÅNG
- TF TAKFÖNSTER



VINDSVÅNING

GRÄNS  
BOYTA  
GRÄNS  
SNEDTAK  
RUMSHÖJD  
2400

# HUS 18 | 20

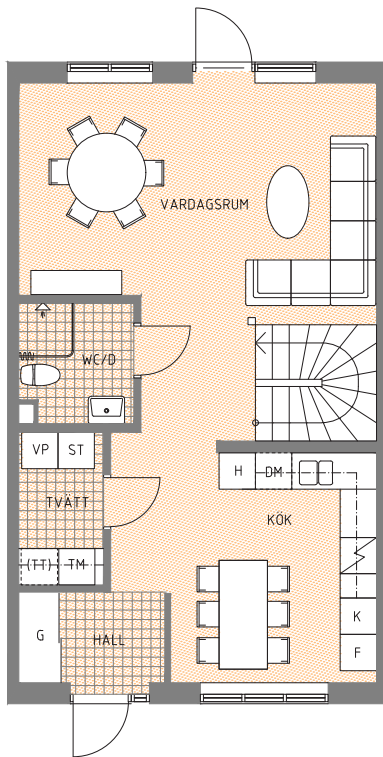
HUSTYP A2, BOYTA 157 M<sup>2</sup>



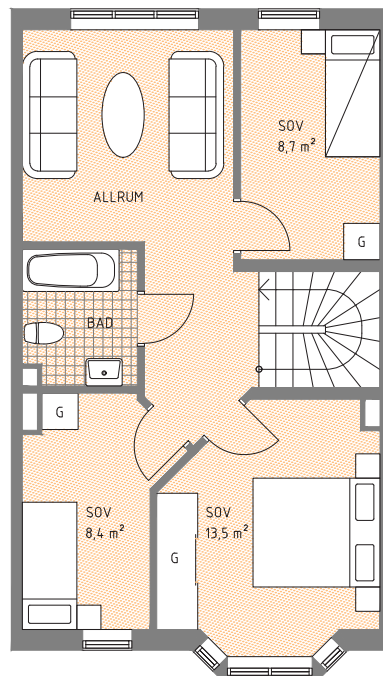
FASAD FRAMSIDA  
SKALA 1:200



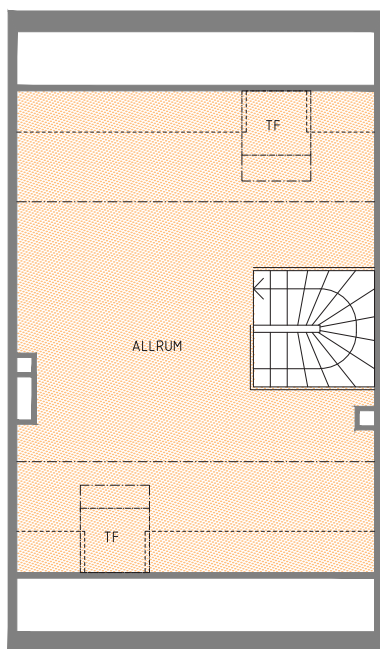
BAKSIDA  
SKALA 1:200



ENTRÉPLAN



ÖVERVÅNING



VINDSVÅNING

GRÄNS  
BOYTA  
GRÄNS  
SNEDTAK  
RUMSHÖJD  
2400

## FAKTA

- G GARDEROB
- ST STÄDSKÅP
- K KYL
- F FRY
- H HÖGSKÅP MED UGN O MICRO
- DM DISKMASKIN
- TM TVÄTTMASKIN
- (TT) PLATS FÖR TORKTUMLARE
- VP VÄRMEPANNA
- ↔↔↔ KLÄDSTÅNG
- TF TAKFÖNSTER

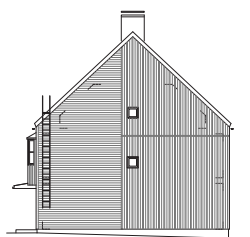


HUSTYP A2, BOYTA 157 M<sup>2</sup>

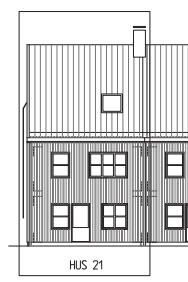
# HUS 21



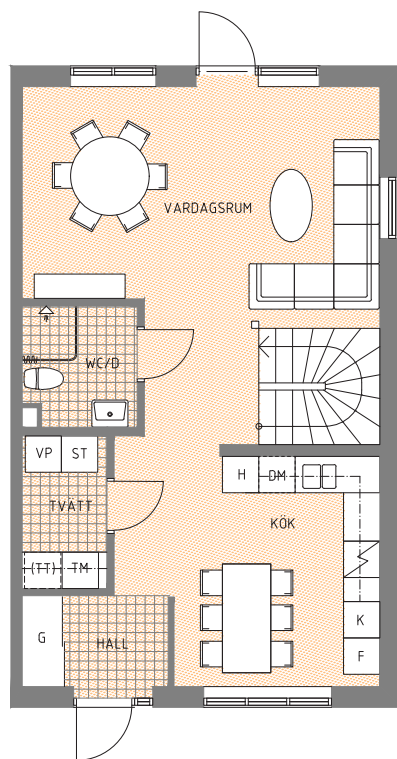
FASAD FRAMSIDA  
SKALA 1:200



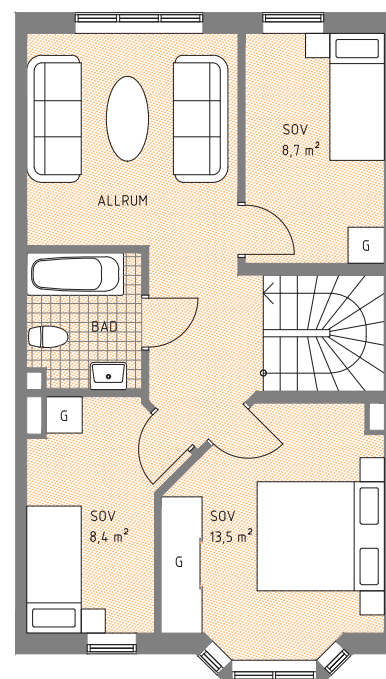
GAVEL  
SKALA 1:200



FASAD RAKSIDA



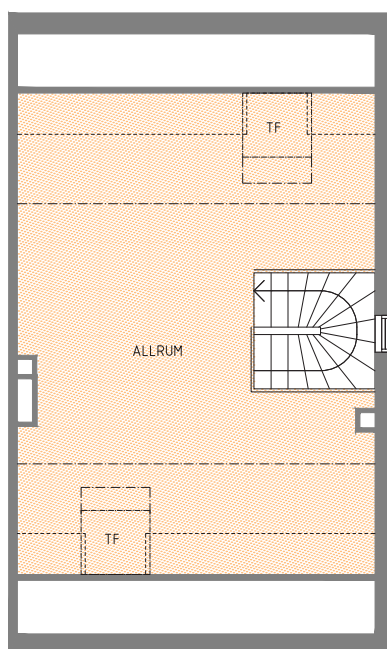
ENTRÉPLAN



ÖVERVÅNING

## FAKTA

- G GARDEROB
- ST STÄDSKÅP
- K KYL
- F FRY
- H HÖGSKÅP MED UGN O MICR
- DM DISKMASKIN
- TM TVÄTTMASKIN
- (TT) PLATS FÖR TORKTUMLARE
- VP VÄRMEPANNA
- KLÄDSTÅNG
- TF TAKFÖNSTER



VINDSVÅNING

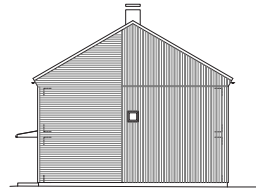
GRÄNS  
BOYTA  
GRÄNS  
SNEDTAK  
RUMSHÖJD  
2400

# HUS 22

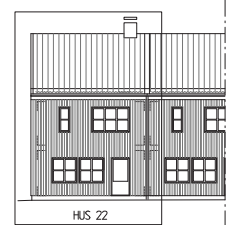
HUSTYP C2, BOYTA 116 M<sup>2</sup>



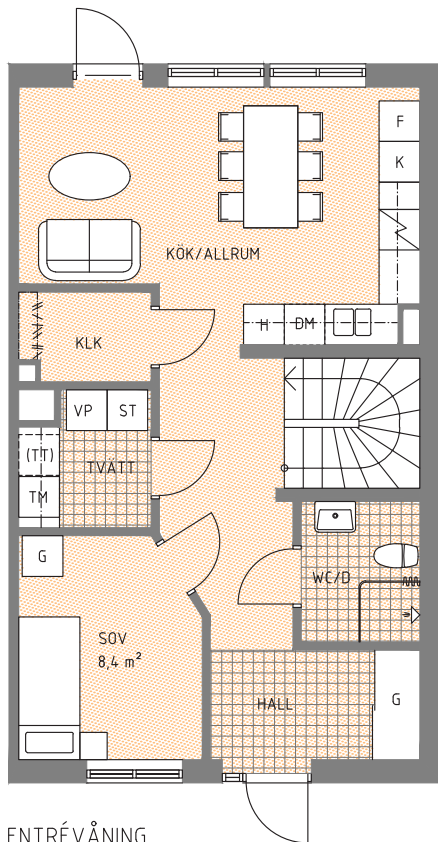
FRAMSIDA  
SKALA 1:200



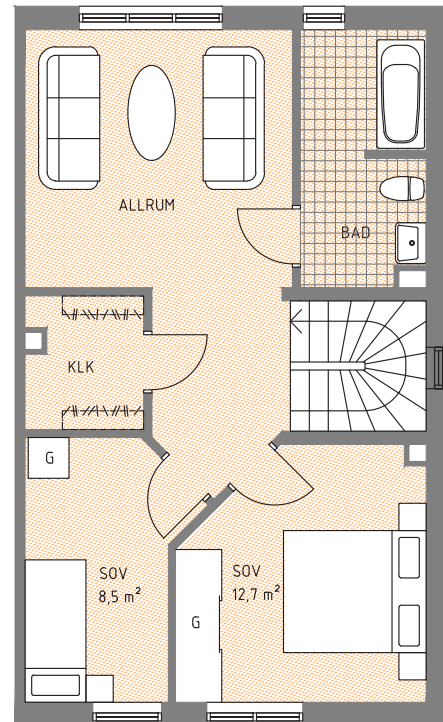
GAVEL  
SKALA 1:200



BAKSIDA  
SKALA 1:200







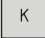


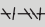


ENTRÉVÅNING



ÖVERVÅNING

## FAKTA

 G	GARDEROB	 DM	DISKMASKIN
 ST	STÄDSKÅP	 TM	TVÄTTMASKIN
 H	HÖGSKÅP MED UGN O MICRO	 (TT)	PLATS FÖR TORKTUMLARE
 K	KYL	 VP	VÄRMEPANNA
 F	FRYS		KLÄDSTÅNG

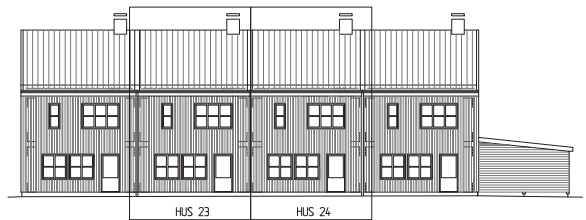


HUSTYP C2, BOYTA 116 M<sup>2</sup>

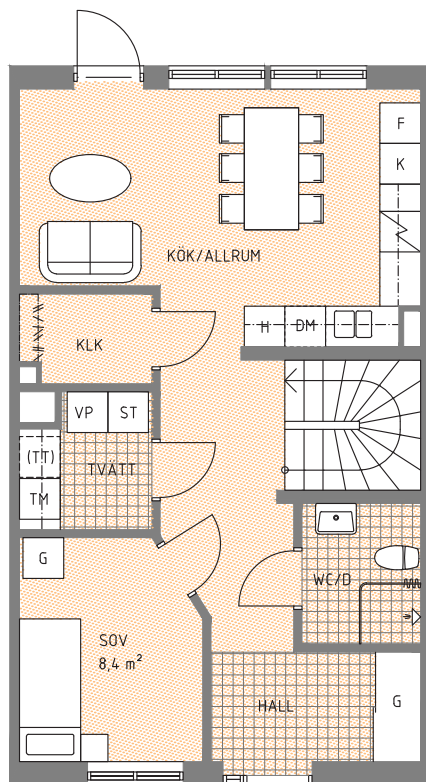
# HUS 23 | 24



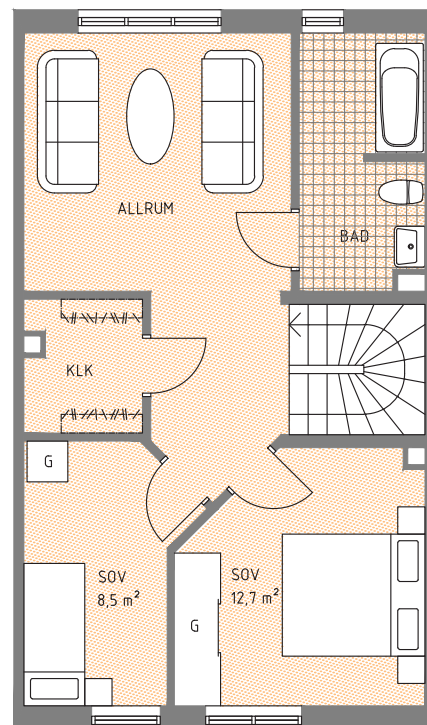
FRAMSIDA  
SKALA 1:200



BAKSIDA  
SKALA 1:200







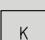


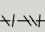


ENTRÉVÅNING



ÖVERVÅNING

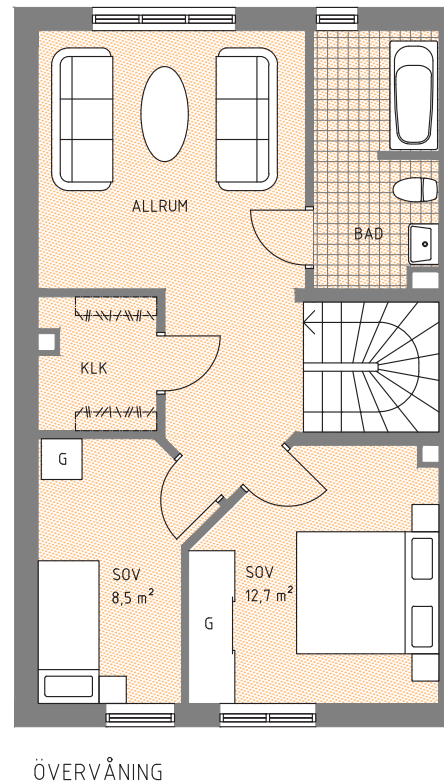
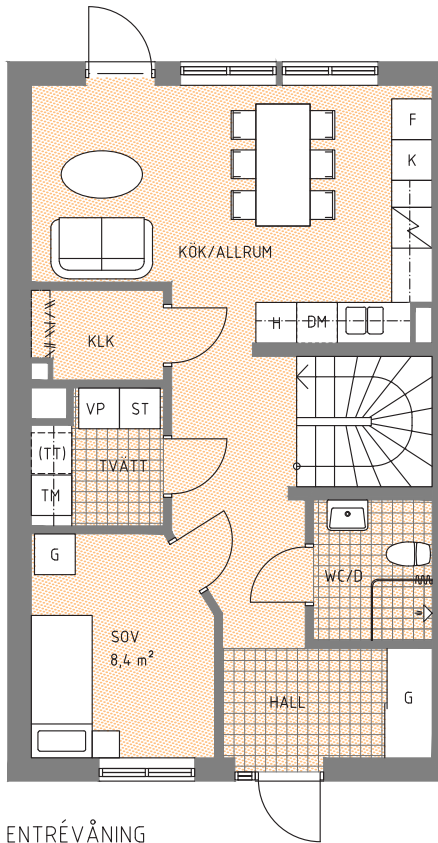
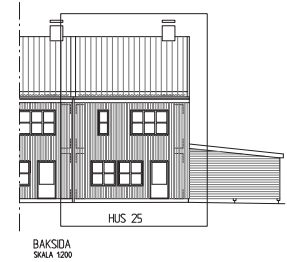
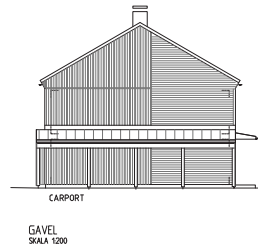
## FAKTA

 G	GARDEROB	 DM	DISKMASKIN
 ST	STÄDSKÅP	 TM	TVÄTTMASKIN
 H	HÖGSKÅP MED UGN O MICRO	 (TT)	PLATS FÖR TORKTUMLARE
 K	KYL	 VP	VÄRMEPANNA
 F	FRYS		KLÄDSTÅNG










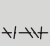


# HUS 25

HUSTYP C2, BOYTA 116 M<sup>2</sup>



## FAKTA

 G	GARDEROB	 DM	DISKMASKIN
 ST	STÄDSKÅP	 TM	TVÄTTMASKIN
 H	HÖGSKÅP MED UGN O MICRO	 (TT)	PLATS FÖR TORKTUMLARE
 K	KYL	 VP	VÄRMEPANNA
 F	FRYS		KLÄDSTÅNG



HUSTYP B6, BOYTA 129 M<sup>2</sup>

# HUS 26



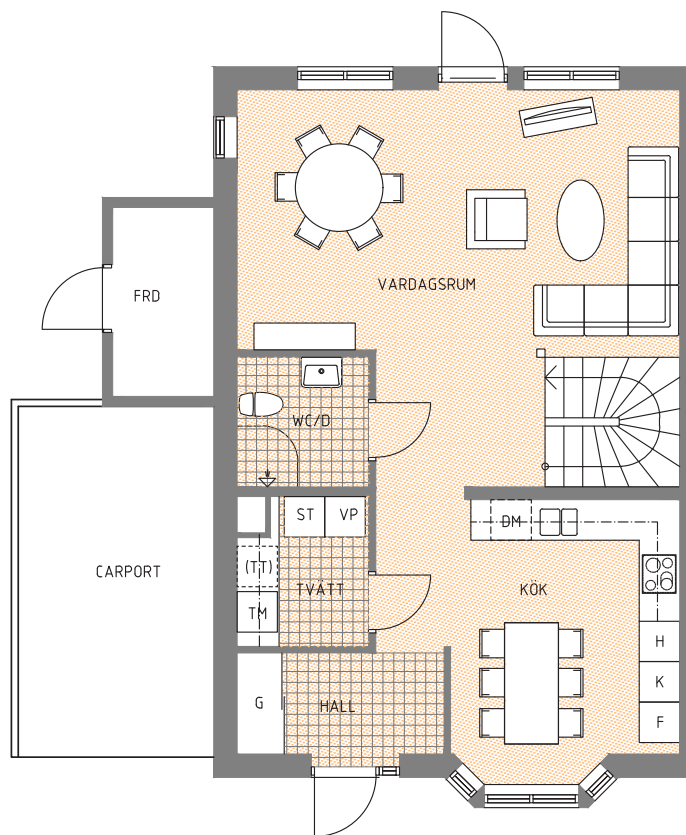
FRAMSIDA



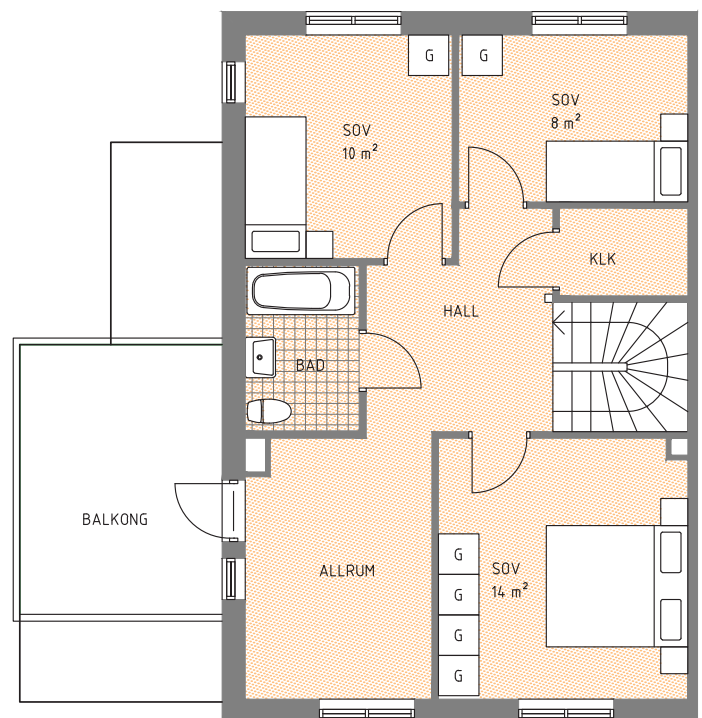
GAVEL



BAKSIDA



ENTRÉPLAN



ÖVERVÅNING

## FAKTA

	GARDEROB		DISKMASKIN
	STÄDSKÅP		TVÄTTMASKIN
	HÖGSKÅP MED UGN O MICRO		PLATS FÖR TORKTUMLARE
	KYL		VÄRMEPANNA
	FRYS		KLÄDSTÅNG

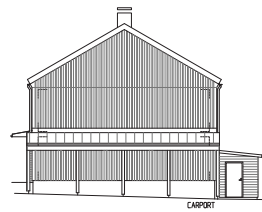


# HUS 29

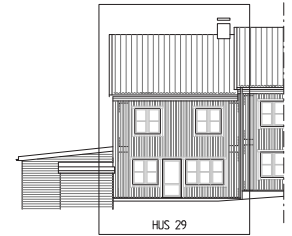
HUSTYP B1, BOYTA 128 M<sup>2</sup>



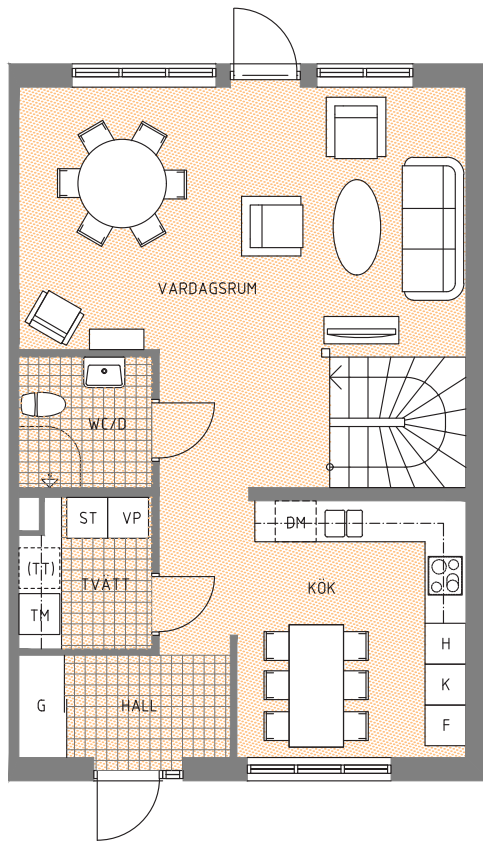
FRAMSIDA  
SKALA 1200



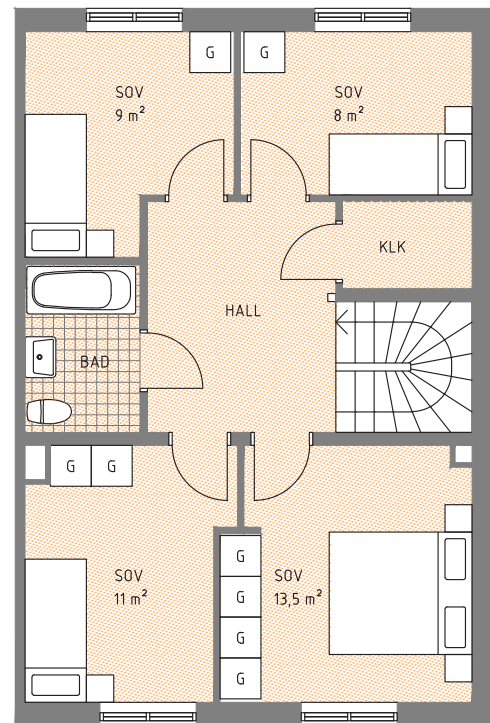
GAVEL  
SKALA 1200



BAKSIDA  
SKALA 1200



ENTRÉPLAN



ÖVERVÅNING

## FAKTA

<span style="border: 1px solid black; padding: 2px;">G</span> GARDEROB	<span style="border: 1px solid black; padding: 2px;">DM</span> DISKMASKIN
<span style="border: 1px solid black; padding: 2px;">ST</span> STÄDSKÅP	<span style="border: 1px solid black; padding: 2px;">TM</span> TVÄTTMASKIN
<span style="border: 1px solid black; padding: 2px;">H</span> HÖGSKÅP MED UGN O MICRO	<span style="border: 1px dashed black; padding: 2px;">(TT)</span> PLATS FÖR TORKTUMLARE
<span style="border: 1px solid black; padding: 2px;">K</span> KYL	<span style="border: 1px solid black; padding: 2px;">VP</span> VÄRMEPANNA
<span style="border: 1px solid black; padding: 2px;">F</span> FRYS	KLÄDSTÅNG





The background is a solid gold color. Overlaid on this are numerous white-outlined geometric shapes, primarily rectangles and polygons, some of which are tilted at various angles. These shapes are scattered across the page, creating a complex, abstract pattern that resembles a stylized map or a collection of architectural elements.

*Turbinen*

TURBINEN.SE | 08-93 61 50